

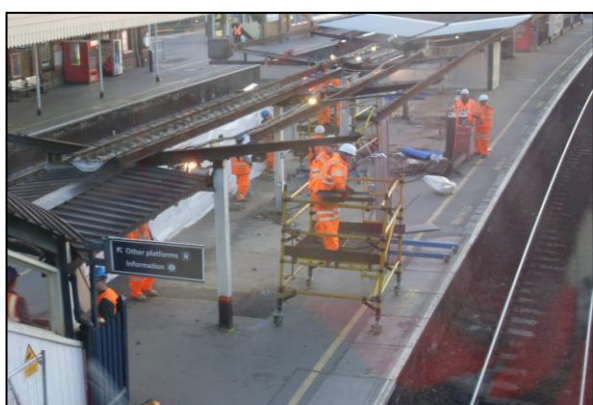
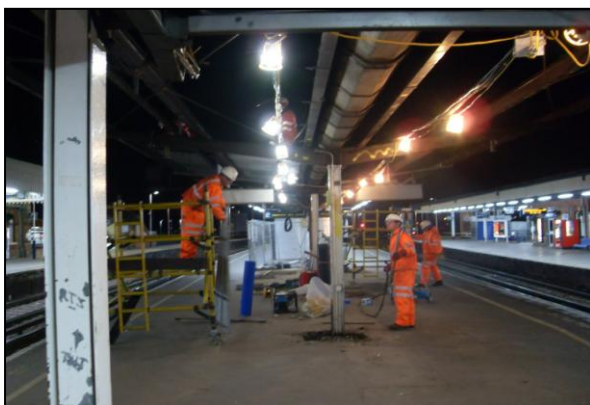
Project: Access Stairs and Canopy Dismantle and Removal from Platform 11 & 12 at Clapham Junction (Phase 1)

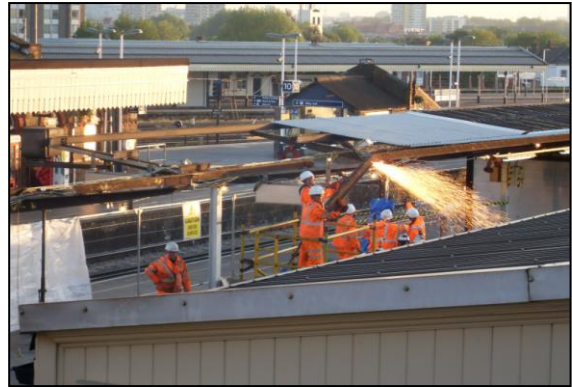
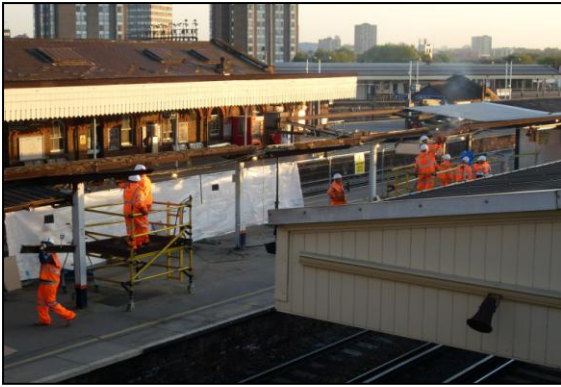
Client: Geoffrey Osborne Rail
Raven House
29 Linkfield Lane
Redhill, Surrey, RH1 1JP

Date: May 2009

Programme: 12 Hr Possesion

Overview: To remove the Asbestos Cement roof sheets, then hot cut and dismantle the canopy frame.





Project: **Canopy Dismantle, Demolition of Platform Building and Removal of Access Stairs from Platform 15 & 16 at Clapham Junction (Phase 2)**

Date & Programme: February 2010 – Platform Building

21 Engineering Hour Shifts for Canopy

1 x 27 Hr Possesion – March 2010 (Completed in 16 Hrs)

Overview: To carefully dismantle the platform building and back fill the basement with arising from demolition.

To remove the roof sheets, then hot cut and dismantle the canopy frame.

To carefully dismantle the Access Stairs to platform.



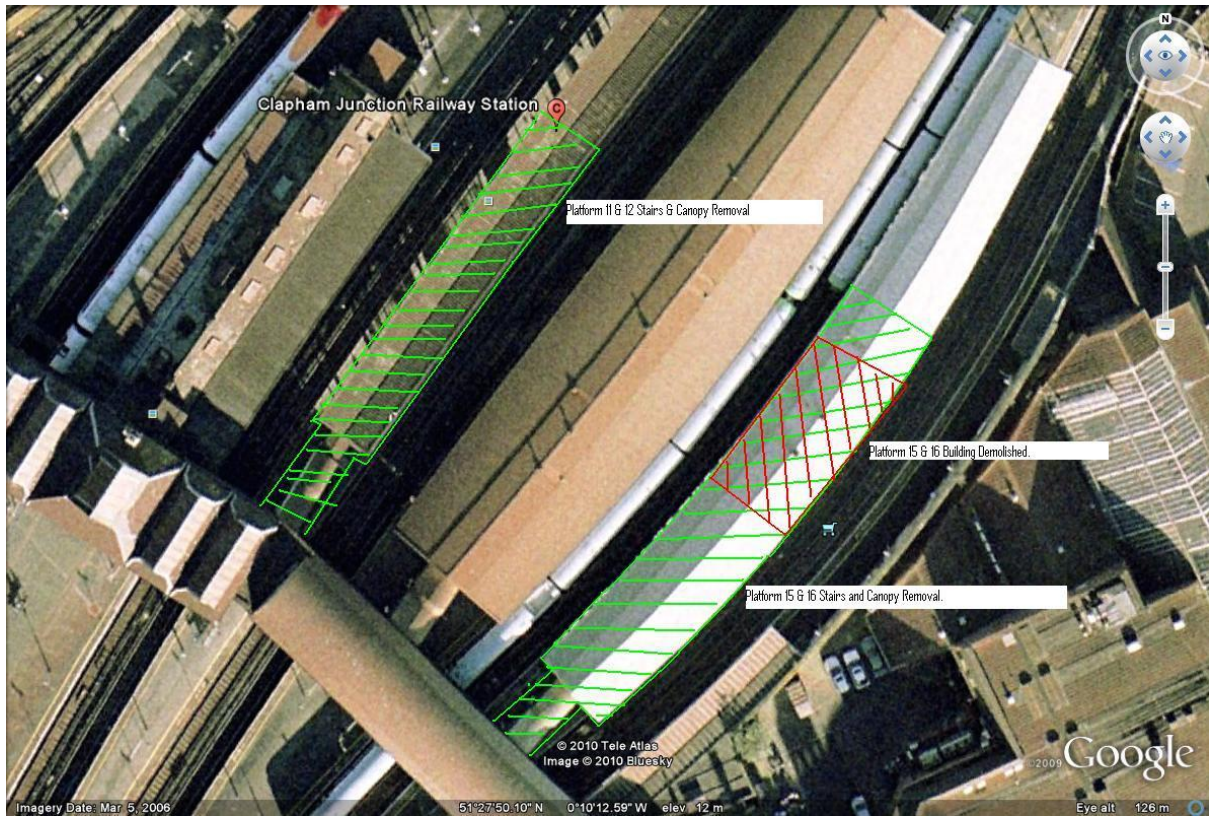
Canopy & Stairs that were removed.



Platform Building That was Demolished



Overview of works carried out.



Project: Demolition of Brimsdowne Signal Box

Client: Geoffrey Osborne Limited

Raven House

29 Linkfield Lane

Redhill, Surrey, RH1 1JP

Date: March 2009

Programme: 52 Hour Possession (Finished in 14 Hours)

Overview: To Demolish the Trackside Redundant Signal Box