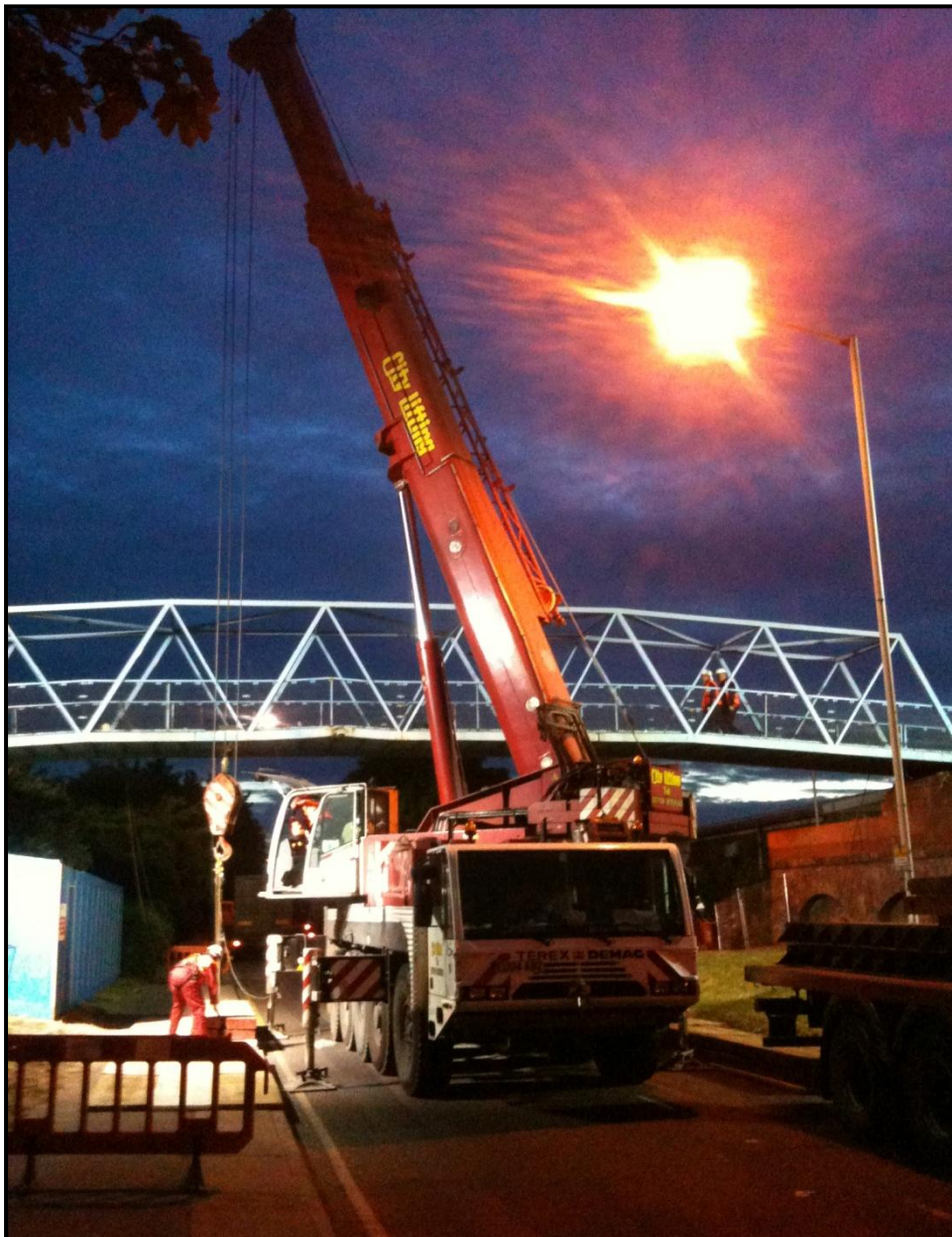


Birse Metro – Removal of Surrey Canal Road Footbridge

Project: Removal of Surrey Canal Road Footbridge

Date: 16th/17th May 2011

Programme: 10 Hours



Overview: Econ Construction Limited have gained a contract to carry out the demolition and Enabling works at the East London Line Phase 2. This project involved the demolition of five factory units on an industrial estate with the removal of all the slabs. Separation joints were made to the units that were remaining. The project also included removing all the Asbestos Containing Materials. Part of this project involved the removal of Surrey Canal Road pedestrian footbridge.

Operatives / Skills

- Main Contractor's Site Foreman / Site Manager
- Main Contractor's Certificated plant operators (esp Crane Operator, Lifting Supervisor, Appointed Person & Slinger/Signaller)
- Econ's First Aider
- Econ's Site Manager
- Traffic marshal / Banksman
- Econ's Demolition Operatives, Leading Hands and Burners
- Econ's Fire Watchperson



Programme/ Delivery Constraints:

Works were completed in time for the road to be handed back for opening.

During the road closure Econ staff worked necessary hours to:

Lay out temporary protection to the road surface

Set up fire points

Set up oxy propane burning equipment

Liaise with the crane supplier

Locally cut steel decks (to allow un-snagged lifting of each section)

Locally cut back handrails and mesh where necessary (to allow un-snagged lifting of each section)

Free each of the four sections for lifting by blowing retaining bolts

Cut each bridge section into manageable sized pieces for transport

Provide Fire Watchperson attendance throughout the works and for a minimum of one after the last hot cut.

Remove arisings from the bridge deck removal by low loader or RORO skip

Remove Temporary Protection Materials

Remove all Econ's Plant and Equipment

Leave all Econ's working areas clean

Recycling

Econ recycled 100% of all arising from this project.